

# JCDecaux HONG KONG TRANSPORT

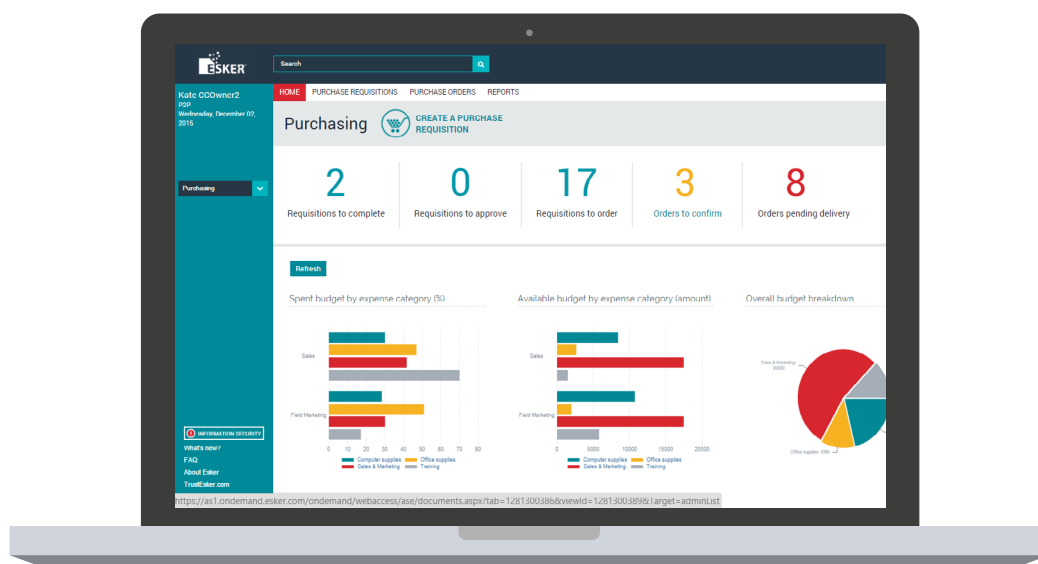
## ELEVATING EFFICIENCY, PRODUCTIVITY & VISIBILITY WITH AN AI-DRIVEN P2P AUTOMATION SOLUTION

### BACKGROUND

JCDecaux Transport in Hong-Kong is the subsidiary of a worldwide advertising firm focusing exclusively on outdoor advertising. Prior to Esker, JCDecaux Transport in Hong-Kong's manual purchase-to-pay (P2P) processing methods were making it difficult to follow the purchase requisitions, purchase orders, invoices and approvals that passed through all of its departments on a daily basis. Faced with difficulties tracking and maintaining its purchasing requests, as well as drawn out payment cycles, JCDecaux Transport in Hong-Kong began searching for a solution to resolve these workflow-related issues and optimise its P2P process.

### SOLUTION

JCDecaux Transport in Hong-Kong's previous P2P process relied heavily on Excel files to follow purchases, which involved the purchasing team updating the file based on the received goods before passing it on to the finance department. Now, thanks to Esker's P2P solution, JCDecaux Transport in Hong-Kong has been able to eliminate 100 percent of paper as well as manual Excel spreadsheet processing. Purchases are requested directly on Esker's platform with digital workflow approval, making it easy for the company to track all purchases with a standard process throughout. All necessary documents are available by the time invoices arrive in the finance department for processing.



*"I'm amazed at how user-friendly Esker's P2P solution is. We were up and running in no time with very little training required. Thanks to Esker's automatic three-way matching, we've eliminated manual processing and no longer need to maintain those Excel spreadsheets! It feels like everything is aligned now."*

Josephine Chow | Production Manager

## BENEFITS

Thanks to Esker, JCDecaux Transport in Hong-Kong has achieved numerous benefits, including:



**Increased efficiency and productivity** by eliminating repetitive and low-value tasks from the P2P process



**Facilitated faster approvals** and improved control over purchases thanks to digital workflow



**Enhanced visibility** with all information centralised and available on one platform and one solution interface



**Accessibility and easy retrieval** of documents and approval



**Expedited and easy user training** for all departments, thanks to user-friendly interface



**Easier maintenance & purchasing tracking** thanks to reports and platform dashboards



*"Before Esker, approvals, documents, emails and logs were everywhere. It was difficult for us to keep track of things and retrieving documents was a nightmare. Now with Esker's P2P solution in place, we not only have full process visibility, but we are also able to put internal processes in place."*

Alexa Dartenucq | Finance Director

## ABOUT JCDecaux TRANSPORT IN HONG-KONG

JCDecaux Transport in Hong-Kong is a subsidiary of the JCDecaux Group and operates the advertising concessions for the MTR Corporation, Hong Kong International Airport and Macau International Airport. Established in 1964, JCDecaux Group pioneered the street furniture concept and is today the number one worldwide outdoor advertising company. Listed on the Euronext Paris, the company has operations in more than 80 countries with a presence in over 4,031 cities with over 10,000 inhabitants and 1 million advertising panels.

JCDecaux employs 13,030 people worldwide and reaches over 340 million people in the world.

©2019 Esker S.A. All rights reserved. Esker and the Esker logo are trademarks or registered trademarks of Esker S.A. in the U.S. and other countries. All other trademarks are the property of their respective owners.